

# Design and Analysis of Multistoried Structure by Using STAAD Pro

Gomasa Ramesh

## ABSTRACT

The main goal of this project is to use STAAD Pro to investigate and construct a multi-story building. The architecture entails manually calculating loads and testing the whole system with STAAD Pro. As specified by the Indian Standard Code of Practice, Limit State Architecture is used in the STAAD Pro research. STAAD Pro comes with a cutting-edge user experience, simulation software, and versatile research and modeling engines to perform sophisticated. It is a model generation choice for professionals, study, design, and simulation, and outcome verification. We began by analyzing essential manually test two-dimensional frames with the software's accuracy against our findings. The outcomes were correct. STAAD Pro provides a relatively user-friendly GUI that helps users draw the structure and enter load values and measurements. The configuration is then analyzed, and participants with reinforcement information for RCC frames are designed based on the given parameters. We proceeded to experiment with. Under several load conditions, multistoried frames were tested. The study and configuration of an RCC frame under different load variations was our final project. G + floors made up the y-axis. On each floor, there were a total of beams and columns. The first floor was meters tall, and the other floors were meters tall. STAAD Pro calculated the wind load values based on the assigned wind intensities at various heights when strictly adhering to IS 875 requirements. IS 1893-2000 was used to calculate the seismic load. The beam and column members' cross-sections were allocated, and the materials were listed. The fixed supports at the structure's base were also defined. For design purposes, the practice standards were also listed, along with other essential information. The configuration was then analyzed, and the participants were designed using STAAD Pro. After the design has been completed. We may also examine the deflection of different participants under various loading scenarios. The basic specifications dictate the building's architecture set out in the Indian Standard Codes. The basic standards for the structural protection of buildings are protected by establishing minimum construction loads that must be expected. It is anticipated that strict adherence to the loading criteria recommended in this code would ensure the buildings' structural integrity. Limit State Method was commonly used to construct structures and structural components. Complex and high-rise buildings necessitate lengthy and time-consuming measurements utilizing traditional manual processes. STAAD Pro provides us with a forum for analyzing and developing fast, effective, simple to use, and reliable systems.

**Keywords:** STAAD Pro, Design, Loads, IS Codes.

### To Cite:

Ramesh G. Design and Analysis of Multistoried Structure by Using STAAD Pro. *Indian Journal of Engineering*, 2021, 18(49), 191-197

### Author Affiliation:

Department of Civil & Structural Engineering,  
Vaagdevi College of Engineering, Warangal,  
Telangana, India; E-Mail: rameshgomasa1@gmail.com

### Peer-Review History

Received: 28 April 2021

Reviewed & Revised: 30/April/2021 to 28/May/2021

Accepted: 30 May 2021

Published: June 2021

### Peer-Review Model

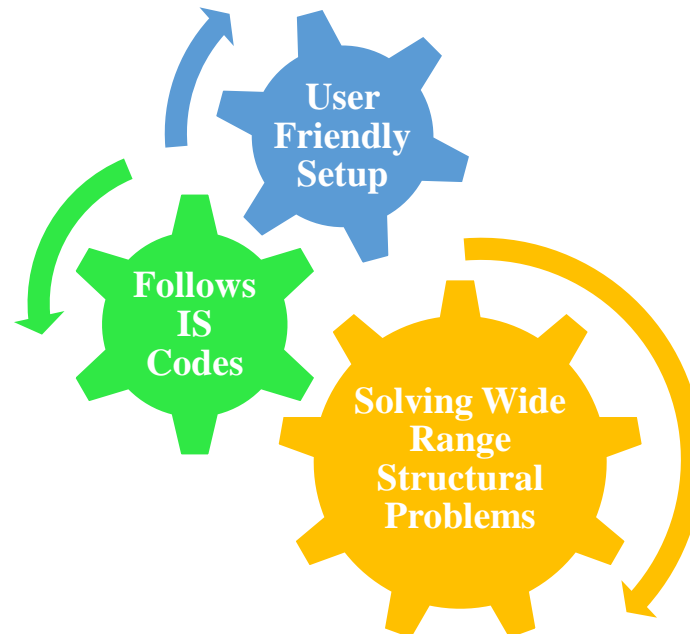
External peer-review was done through double-blind method.



© The Author(s) 2021. Open Access. This article is licensed under a [Creative Commons Attribution License 4.0 \(CC BY 4.0\)](http://creativecommons.org/licenses/by/4.0/), which permits use, sharing, adaptation, distribution and reproduction in any medium or format, as long as you give appropriate credit to the original author(s) and the source, provide a link to the Creative Commons license, and indicate if changes were made. To view a copy of this license, visit <http://creativecommons.org/licenses/by/4.0/>.

## 1. INTRODUCTION

The solution's precision STAAD Pro comes with a cutting-edge user experience, simulation software, and versatile research and modeling engines to perform sophisticated finite element and dynamic analysis. Our project entails the study and construction of multi-story structures using STAAD Pro, a standard design program. STAAD Pro was selected because of the following benefits:



The outcomes were satisfactory and correct. In the early stages of our project, we calculated building loadings. The study and prediction of device actions using a set of physical laws and mathematics is known as structural analysis.

A structural engineer must assess structural stresses, geometry, support conditions, and material properties to conduct an adequate study. Help responses, strains, and displacements are expected outcomes in such a study. After that, the data is related to parameters that suggest failure conditions. Dynamic reaction, consistency, and non-linear behavior may all be studied using advanced structural analysis.

The design aims to accomplish something a reasonable chance that the systems being built can work satisfactorily for the duration of their planned lives. They should be able to withstand all of the loads and deformations that come with regular building and use and provide sufficient longevity and tolerance to the impact of seismic and wind.

The Limit State Method is typically used to construct structures and structural components. Accepted ideas, experimentation, and practice, and the need to plan for reliability should all be considered. Buildings, like reliability design, construction, and usage in operation, should be taken into account. Compliance with precisely specified requirements for materials, manufacturing, quality, and maintenance and use of the structure in the process is required to achieve design objectives.

The basic specifications dictate the building's architecture set out in the Indian Standard Codes. The basic standards for the structural protection of buildings are protected by establishing minimum construction loads that must be expected any additional loads that the structure must carry. It is anticipated that strict adherence to the loading criteria prescribed in this code.

### Loads

#### *Dead loads*

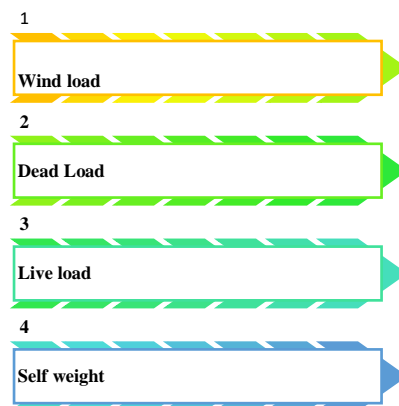
The structure's permanent constructions form the dead loads. The measurements and unit weights of various participants will be used to determine the dead loads. Easy and reinforced concrete unit weights made of cement, rubble, or compressed natural stone aggregate are 24 and 25 kilograms per foot.

**Imposed loads**

Dispersed and condensed loads and dust loads are examples of imposed loads caused by a house's expected usage or occupation. Wind, seismic activity, precipitation, and loads added to the structure due to environmental fluctuations and uneven settlements to which the structure may be subjected are not taken into account in the imposed loads.

**Wind load**

Wind is the air that is moving close to the earth's atmosphere. Convection, whether upwards or downwards, is primarily caused by radiation effects. A strong wind rates, the wind typically blows horizontally to the earth. Anemometers are used to measure wind speeds. Wind speed ( $V_s$ ) for any site and modify it to have the following effects: a. The extent of risk; b. The roughness of the terrain, The impact of obstructions that make up the land surface roughness must be considered when selecting terrain categories depending on the direction of the wind and the terrain category. Any building or structure's orientation can be suitably prepared if adequate meteorological knowledge regarding the type of wind direction is accessible. Local topographic characteristics such as peaks, mountains, and escarpments may significantly influence the wind area's speed.

**Lateral force for seismic load**

The lateral force of the architecture must first be measured for the whole system. The architecture's lateral pressure would then be spread over the different floor levels. Depending on the floor diaphragm activity. It does not, though, require the basement storeys because they are not as well linked. Buildings of uneven floor plans are impossible to model for complex study. The architecture base shear (VB) must be compared Time History.

**2. METHODOLOGY**

The research system of time history must be conducted using agreed dynamics concepts. It must be dependent on an accurate ground motion.

**Working****Input production**

Communication between the STAAD analysis engine and the STAAD input file. A sequence of instructions must be performed in a particular order from the input register. The commands either include guidance or data about research and architecture. The input file is generated by the GUI Modeling facility using an immersive menu-driven graphics-oriented technique. STAAD input file.

**Structural types**

An assemblage of components is what a STRUCTURE is. STAAD will analyze and build systems made up of board, plate/shell, and strong components. STAAD can study almost every kind of structure. A TRUSS system is made up of truss components and can only withstand axial component forces and cannot bend. The research will not be done until the E meaning for members is given. Weight 12 density (DEN) is only utilized where the structure's weight must be considered. The shear modulus (commonly known as G) and is used to quantify the expansion of the participants. ALPHA and temperature load would each use the same temperature unit. SUPPORTS Different releases' support is labeled as PINNED, FIXED, or FIXED. The rotational movement of a pinned support is unrestricted, but the translational movement is limited. To put it another way, a pinned help can respond to all powers but will

not resist any moments. The mobility of fixed support is restricted in both directions. You may also specify translational and rotational springs.

## Loads

### Joint loads

Member loads, temperature loads, and fixed-end member loads are all types of loads defined in a structure. STAAD may also produce the structure's self-weight & is used in the analysis as member loads that are evenly distributed. Every free joint in a system will be subjected to joint loads, which provide all forces and moments. These loads operate on the structure's global coordinate scheme. The positive coordinate directions are affected by positive powers. A single joint will have any loads attached to it, and on that joint, the loads will be additive.

### Component load

- A member of a structure may be subjected to three different kinds of member loads. Uniformly dispersed loads, clustered loads, and linearly variable loads are all examples of these types of loads including trapezoidal.
- Uniform loads work on a member's whole duration or a portion of it. Concentrated loads affect every intermediate, predetermined place. Loads that differ linearly function over the entire duration of a participant.
- Trapezoidal linearly differing loads work on a member's whole or partial length. There are two types of trapezoidal loads: standardized loads and concentrated loads. it better to use the global coordinate system or the participant coordinate system. may be used to specify member loads. In the global coordinate system, uniformly distributed component loads may be defined to work over the whole or predicted duration of the member.
- Calculating the member load for individual members on that floor could take a long time.
- Member property generation STAAD may be used to create member properties.

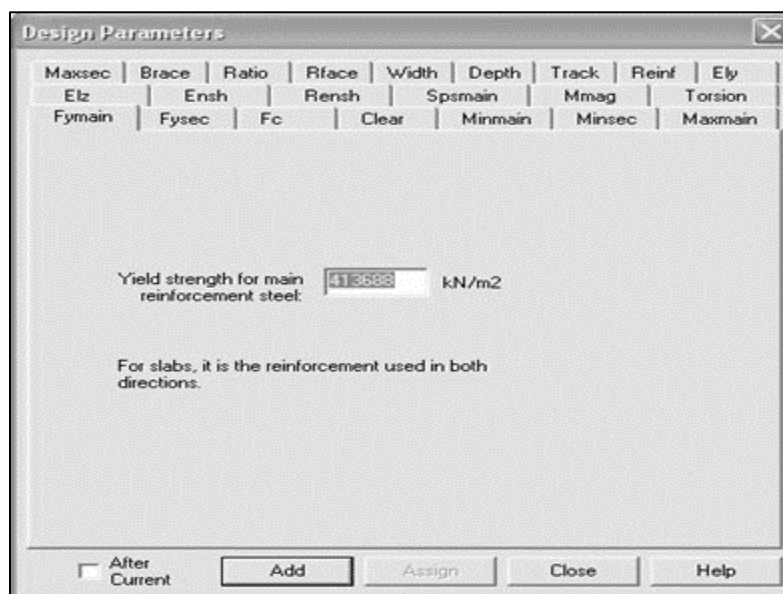


Fig. Design Parameters

## Supports

The structure's foundation supports are designated as fixed. STAAD was used to build the supports. 24-hour support generator. Securing the structure's supports.

## Loading instructions

STAAD was used to produce the remainder of the loadings, partly measured manually. Load generator for professionals. The loading scenarios were divided into three categories:

- STAAD may be used to produce the structure's self-weight. Make a name for yourself in the load case column by using the self-weight button. From the slab, dead load: STAAD may also produce dead load from the slab. You can be a pro by determining

the thickness of the floor and the load per square meter. The weight of the post, pole, RCC slab, terracing, exterior walls, internal walls, and parapet over the roof is all taken into account when calculating the load per sq m.

- Trapezoidal form of load delivery & The slab arrangement under DL Each floor's live load, while the terrace level's live load. LL are produced in the same way as the DL on each floor in the previous case. This can be achieved using the load case column's participant load icon. The arrangement is subjected to a live load.
- Wind load: In conjunction with IS 875, the program produced the wind load values. In the wind load group, the describe load command portion included a summary of wind load. Wind speeds were manually measured and entered into the program at various heights. It produces the wind load at various floors based on those values.

### 3. RESULTS & DISCUSSION

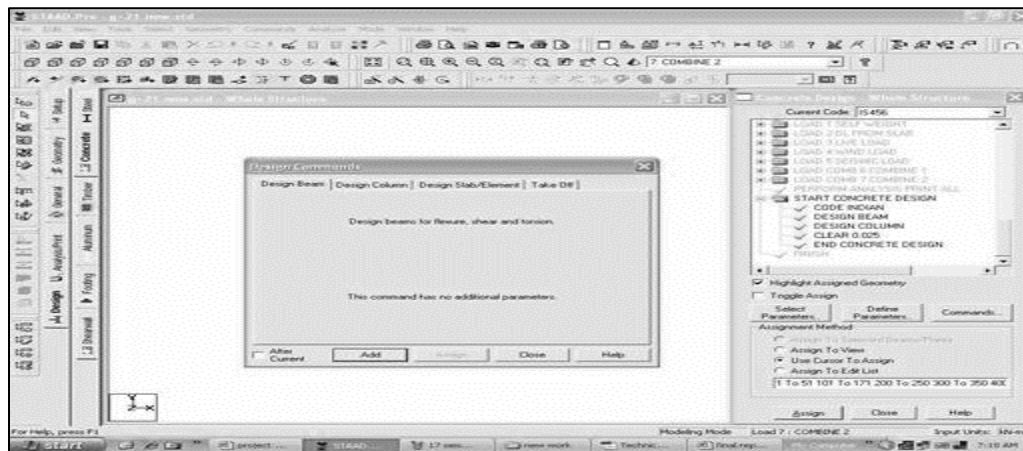


Fig. Specifications of STAAD Pro

- STAAD calculates the design base shear in line. The lateral seismic loads are produced by STAAD using the following method.
- Using the DEFINE 1893 LOAD command, the user enters the desired "1893(Part 1)-2002 specs" as well as the seismic zone co-efficient. The structure time is calculated by the program (T). The program uses T to measure  $S_a/g$ .
- Using the equation above, the program estimates. W is calculated using the weight data. The software then distributes the base shear and IS: 1893(Part 1)-2002 procedures are used to communicate across various layers of the method.

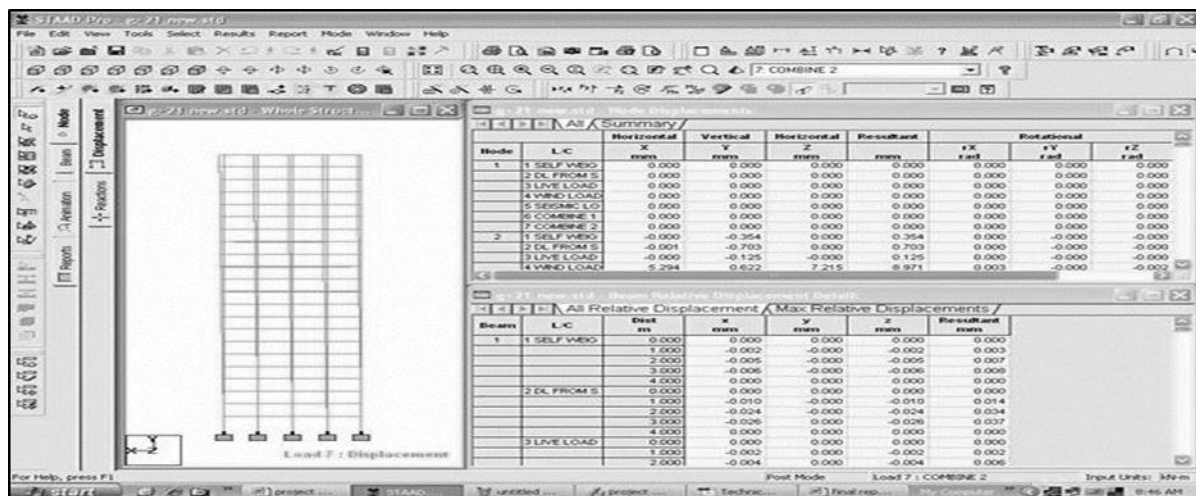


Fig. Mode of Processing

- The average reaction acceleration coefficient  $S_a/g$ , which corresponds to 5% damping, is determined depending on the form of soil. Optional value  $ST f5$  = Type of building. Damping ratio (DM f6) is used to measure damping. For No damping the value of damping is 0.05 percent and corresponding to a multiplication factor of 1.0 would be used.



- Optional structure time in the Z direction (PZ f8) (in seconds). It is used to measure Z direction for seismic load generation. DT f9 denotes the diameter of the foundation under the ground floor. It has to be specified in the unit that is currently in use.
- According to the IS code, the framework was constructed for concrete. Design goals are served by the input window seen below. Then it's time to decide which members will be built as beams and which as columns.

#### 4. CONCLUSION

For every concrete segment, STAAD PRO will calculate the amount of reinforcement needed. The package has a series of parameters that are built in accordance with IS: 456-2000. It is used to determine at both of the parts mentioned above for all active load situations. In all of these sections, both critical sagging and hogging moments were meant to be stopped. A doubly reinforced rectangular segment is sought where a singly reinforced rectangular part is inadequate. To withstand torsional and shear forces, shear reinforcement is used. The beam's standard construction includes flexural and shear reinforcing that runs the length of the structure. Columns are constructed to withstand axial forces and biaxial moments on their faces. Reinforcement is checked with all successful load situations. The critical load is the one that produces the greatest amount of reinforcement. A column template is created for the square section. For sections subjected to biaxial moments, square columns are constructed with reinforcement distributed evenly to either foot. For sections subjected to uniaxial moments, reinforcement is distributed equally on two sides. In the STAAD column configuration, All of the major IS: 456 conditions have been taken into account.

#### Funding

This study has not received any external funding.

#### Conflict of Interest

The author declares that there are no conflicts of interests.

#### Data and materials availability

All data associated with this study are present in the paper.

#### REFERENCES AND NOTES

1. Gomasa Ramesh, Dharna Ramya, Mandala Sheshu Kumar; "Health Monitoring of Structures by Using Non-Destructive Testing Methods", International Journal of Advances in Engineering and Management (IJAEM) Volume 2, Issue 2, pp: 652-654,
2. Gomasa Ramesh, Doddipati Srinath, Mandala Sheshu Kumar; "Earthquake Resistant of RCC Structures" Published in International Journal of Trend in Scientific Research and Development (ijtsrd), ISSN: 2456-6470, Volume-4, Issue-5, August 2020, pp.808-811.
3. Gomasa Ramesh, Doddipati Srinath, Mandala Sheshu Kumar, "Importance of Dynamic Analysis for RCC Structures", International Journal for Modern Trends in Science and Technology, 6(8): 271-276, 2020
4. Gomasa Ramesh, Mandala Sheshu Kumar and Palakurthi Manoj Kumar, "Introduction to Finite Element Methods in Engineering", International Journal for Modern Trends in Science and Technology, 6(9): 167-174, 2020
5. Gomasa Ramesh, Dr. Annamalai Rangasamy Prakash, "Repair, Rehabilitation and Retrofitting of Reinforced Concrete Structures", Special Issue 2021, International Journal of Engineering Research & Technology (IJERT) ISSN: 2278-0181
6. Dharna Ramya, Gomasa Ramesh and Dr. Annamalai Rangasamy Prakash, "Shear Behavior of Hybrid Fiber Reinforced Concrete", International Journal for Modern Trends in Science and Technology, Vol. 07, Issue 02, February 2021, pp.-79-82,
7. Gopu Anil, Gomasa Ramesh and Dr. Annamalai Rangasamy Prakash, "An Experimental Study Investigation on Self Compacting Concrete and Strength Properties by using Fiber Reinforcement", International Journal for Modern Trends in Science and Technology, Vol. 07, Issue 02, February 2021, pp.-93-96
8. Gomasa Ramesh, "Study on Mechanical Properties of Polyurethane Foam Concrete", Indian Journal of Structure Engineering (IJSE) Volume-1 Issue-1, May 2021, pp:1-3, DOI:10.35940/ijse.B8005.051121, Published By: Lattice Science Publication.
9. Gomasa Ramesh, "Importance and Applications of GIS in Engineering", Indian Journal of Structure Engineering (IJSE) Volume-1 Issue-1, May 2021, pp:4-8

10. Gomasa Ramesh, "Transparent Concrete: A Review", Indian Journal of Structure Engineering (IJSE) Volume-1 Issue-1, May 2021, pp:4-8
11. Gomasa Ramesh, "Pervious Concrete: A Review", Indian Journal of Structure Engineering (IJSE) Volume-1 Issue-1, May 2021, pp:4-8
12. Gomasa Ramesh, "Low Carbon Buildings for Sustainable Constructions", Indian Journal of Structure Engineering (IJSE) Volume-1 Issue-2, November 2021, PP:1-4
13. Gomasa Ramesh, "Geopolymer Concrete: A Review", Indian Journal of Structure Engineering (IJSE) Volume-1 Issue-2, November 2021, PP:5-8
14. Gomasa Ramesh, "Self-Compacting Concrete: A Review", Indian Journal of Structure Engineering (IJSE) Volume-1 Issue-2, November 2021, PP:9-12
15. Gomasa Ramesh, "Slope and Landslide Stabilization: A Review", Indian Journal of Structure Engineering (IJSE) Volume-1 Issue-2, November 2021, PP:13-16
16. Gomasa Ramesh, Gopu Anil, Doddipati Srinath, "A Study on Underwater Concrete Structures", International Journal of Innovative Research in Science, Engineering and Technology (IJIRSET), Volume 10, Issue 4, April 2021