

Food Security through Climate Resilient Agriculture Rukmavati River Basin

Kantisen Shroff

Vivekanand Research & Traing Institute
Mandvi – Kutch, Gujarat, India
www.vrti.org

Publication History

Received: 07 August 2015
Accepted: 28 August 2015
Published: 1 October 2015

Citation

Kantisen Shroff. Food Security through Climate Resilient Agriculture Rukmavati River Basin. *Climate Change*, 2015, 1(4), 372-385

FOOD SECURITY THROUGH CLIMATE RESILIENT AGRICULTURE RUKMAYATI RIVER BASIN



**VIVEKANAND RESEARCH & TRAINING INSTITUTE
MANDVI – KUTCH, GUJARAT, INDIA**

WWW.VRTI.ORG

VRTI – A VISION OF MR. KANTISEN SHROFF (PUJ. KAKA)



“We have spent over 40 years in arid draught prone Kutch to understand and emerge with workable solutions on livelihood issues of the community. Community should be made more productive and competent where they live (Rural area)”.

- Trusteeship philosophy
- Better understanding of Natural resources
- Community mobilization and participation
- Respect Traditional Wisdom & Utilize it

VISION:

Efficient use of natural resources which promotes sustainable development in synergy with surrounding environment.

MISSION:

Need based community development with focus on capacity building of community, linkages with different institutions involved in rural development and promote decentralized agro industrialization.

LANDSCAPE RESTORATION

- Initiating journey through Rain water harvesting
 - Prevention of Salinity ingress in coastal area
 - Water storage capacity of different structure – 100,000 million liter
- Watershed programme – 42,000 Ha
- Managing agricultural land – 20,000 Ha
- ***IMPACT***
 - Holistic rural development

CONTEMPORARY CHALLENGES

- Climate change
 - Increasing temperature
 - Change in season cycle
 - Increasing extreme events – droughts, floods, cyclones
- It has induced focusing bigger landscape – river basin as a modular planning unit

RIVER BASIN AS A PLANNING UNIT

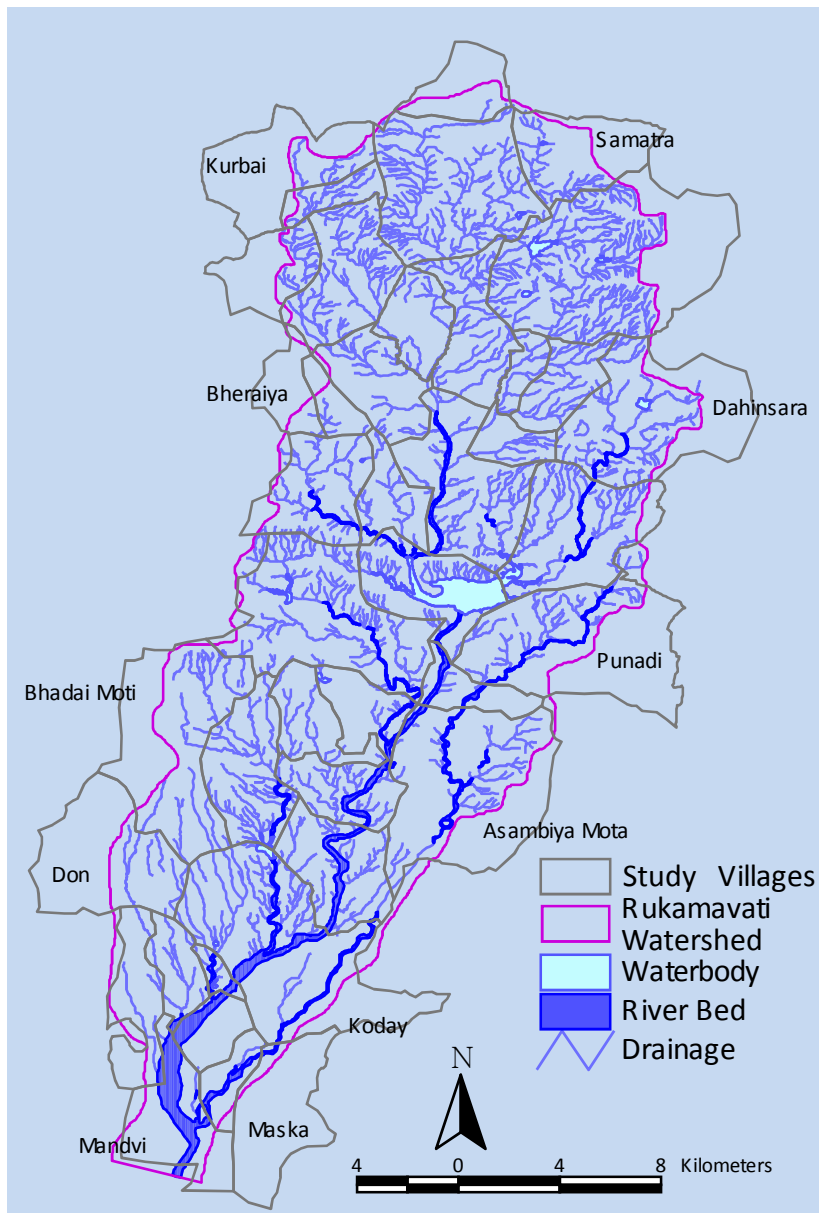
- A natural unit with watershed boundary
- A unit sharing common water resources
- **Management of river basin** is important to **restore landscape**.



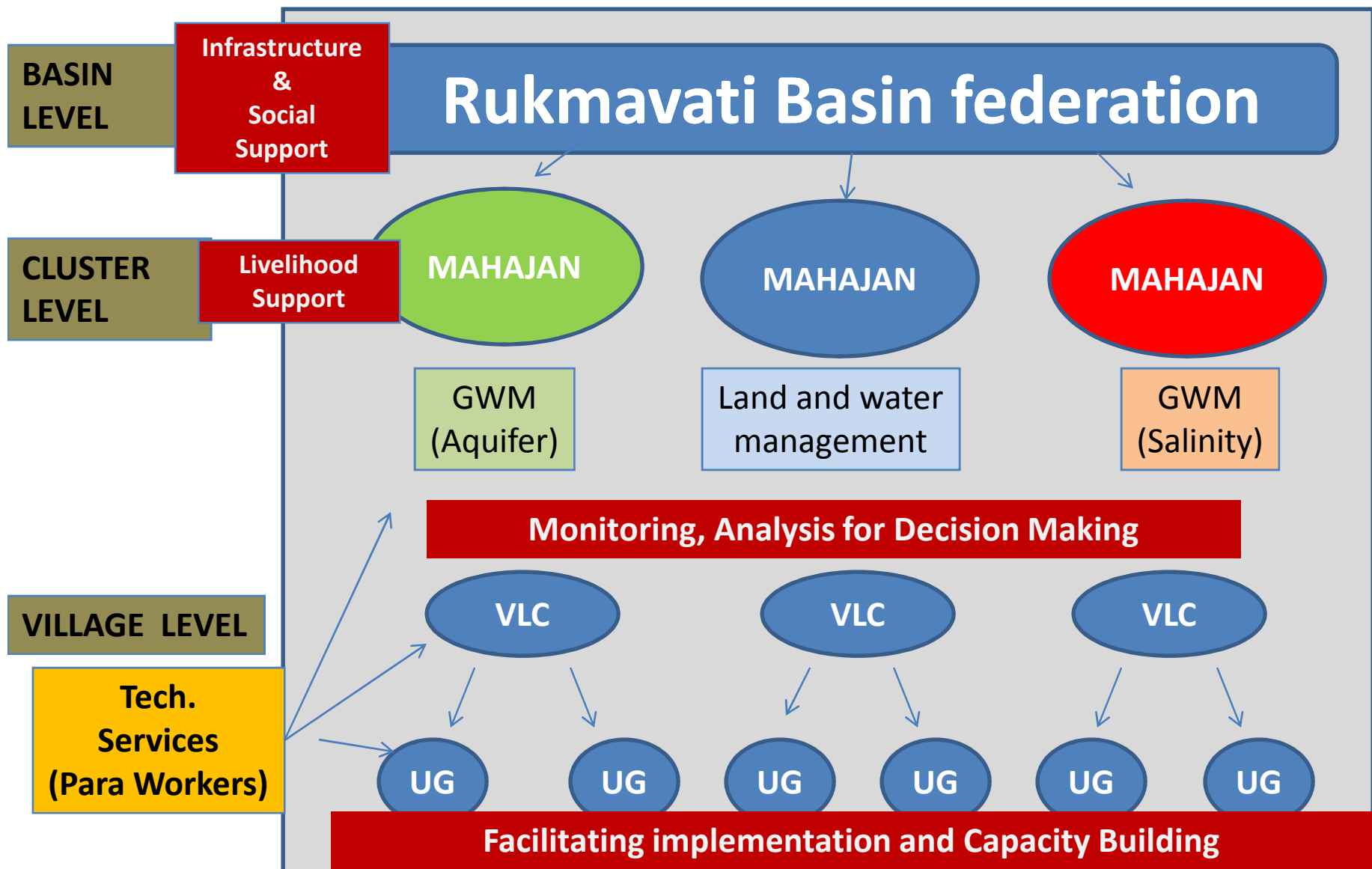
INTEGRATED RIVER BASIN MANAGEMENT

- “It is a process of coordinating **conservation, management and development of water, land and related resources** across sectors within a given river basin.”
- It ensures Economic, Social and Environmental sustainability and **ensure Food, Water & Energy security along with good quality of life with objective to provide sustainable livelihood.**

RUKMAVATI RIVER BASIN – PILOT PROJECT



No of Villages	46
Total population	108033
Total Area	59075 Ha.
Total Agricultural Land	33477 Ha.
Irrigated Land	10268 Ha.
Cultivable Wasteland	5649 Ha.
Forest Area	4282 Ha.
Other Land	15671 Ha.



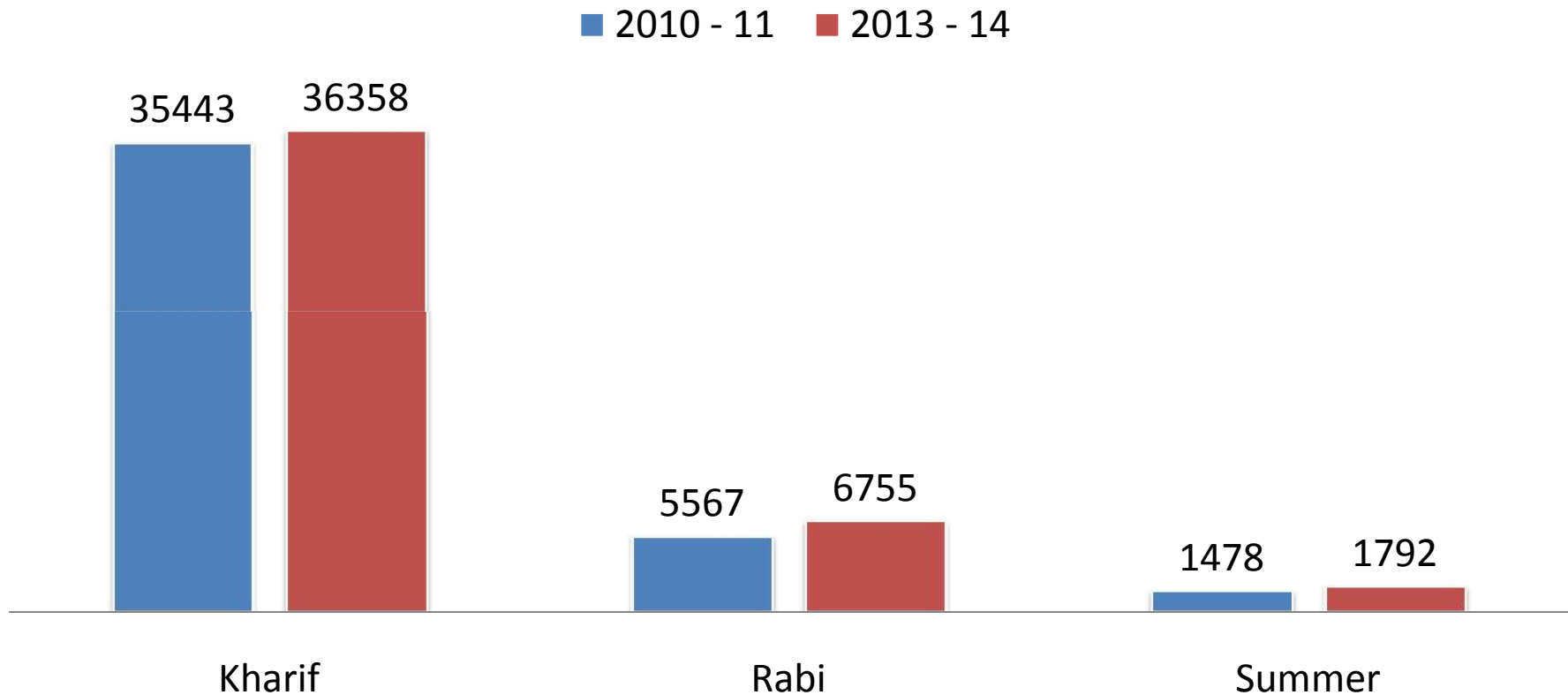
- Water user group, animal husb. group etc.

RUKMAYATI RIVER BASIN PROJECT

- Focusing water resource management
- Promoting efficient water use-Closed pipe, Drip
- Supplementing Farm income for reducing vulnerability due to climate uncertainties, by
 - Animal Husbandry
 - Traditional skills in Handicrafts ,Embroidery
- Improving forward & backward market linkages
- Empowering women in supportive role

AREA UNDER CULTIVATION

Change in cultivated area (Ha)

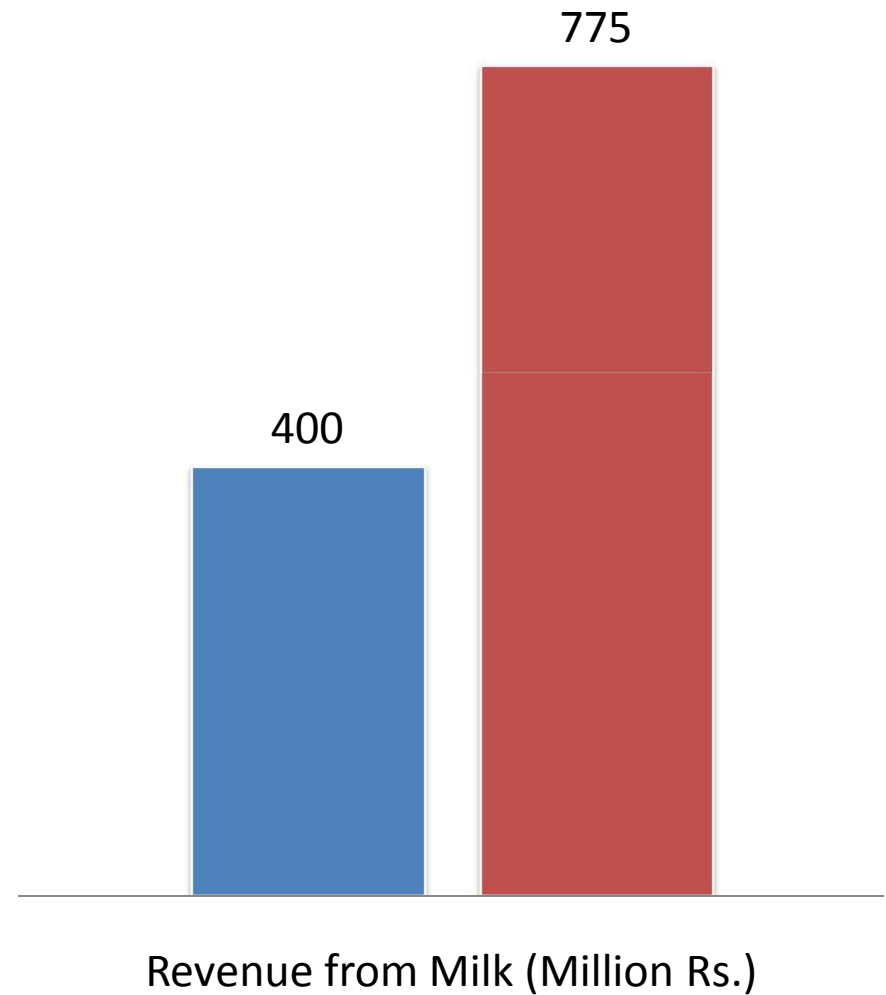
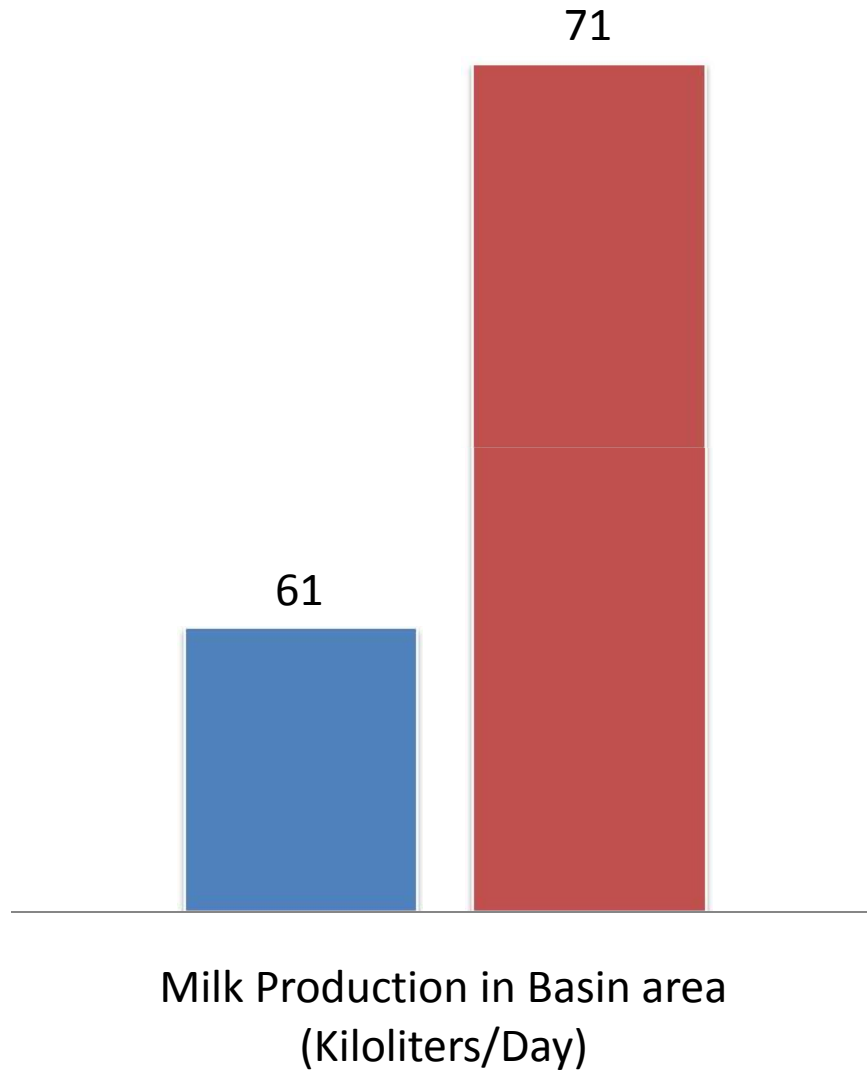


- Area increased under irrigation – 931 Hectares
- There is 21% increase in area under cultivation for rabi and summer season

ANIMAL HUSBANDRY

■ 2010 - 11 ■ 2013 - 14

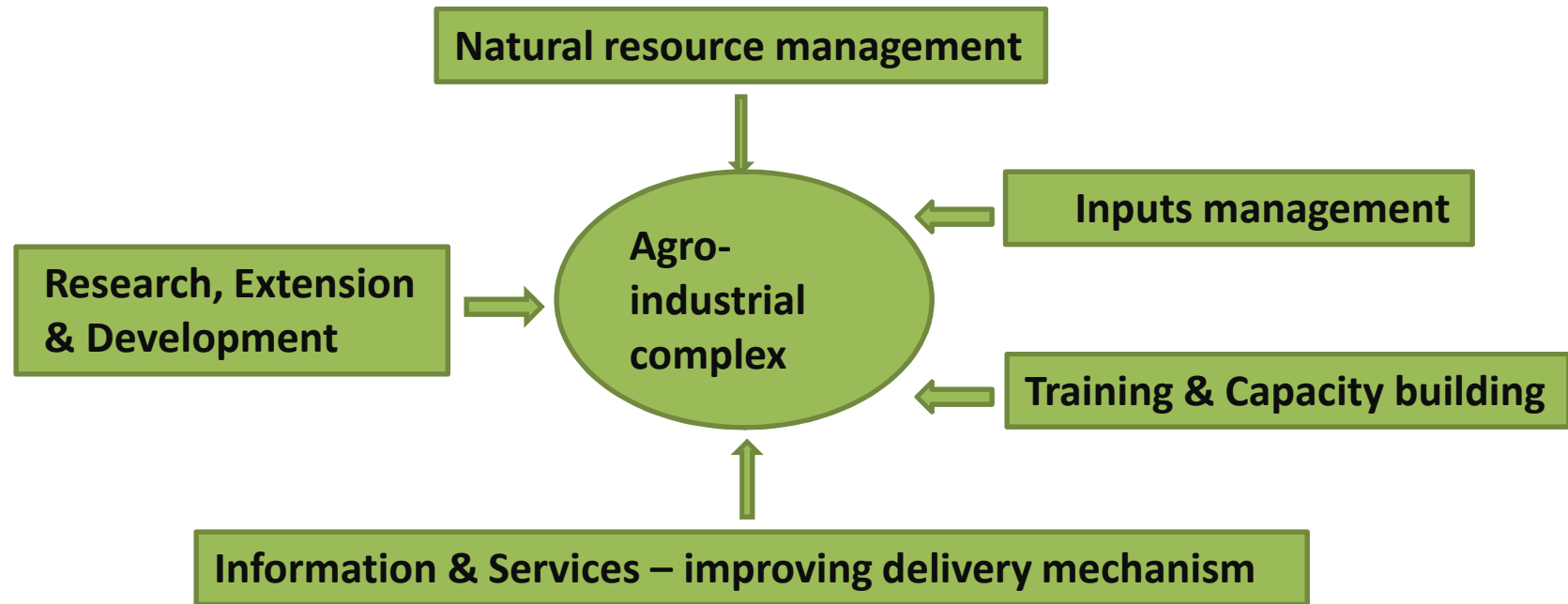
■ 2010 - 11 ■ 2013 - 14



AGENDA IN PROGRESS

- Crop suitability maps through GIS matrix which will help in conserve more resources and better land utilization
- Agriculture productivity improvement – soil & water management, good agricultural practices
- Agricultural produce value addition through cluster based promotion of warehousing, processing and market linkage
- Animal health, nutrition and productivity improvement

DECENTRALIZED RURAL INDUSTRIAL COMPLEX



- Interlinking of Agriculture & Industries
- The raw material - Renewable resources
- Reinvesting the wealth created by both Agriculture & Industries for sustainable growth